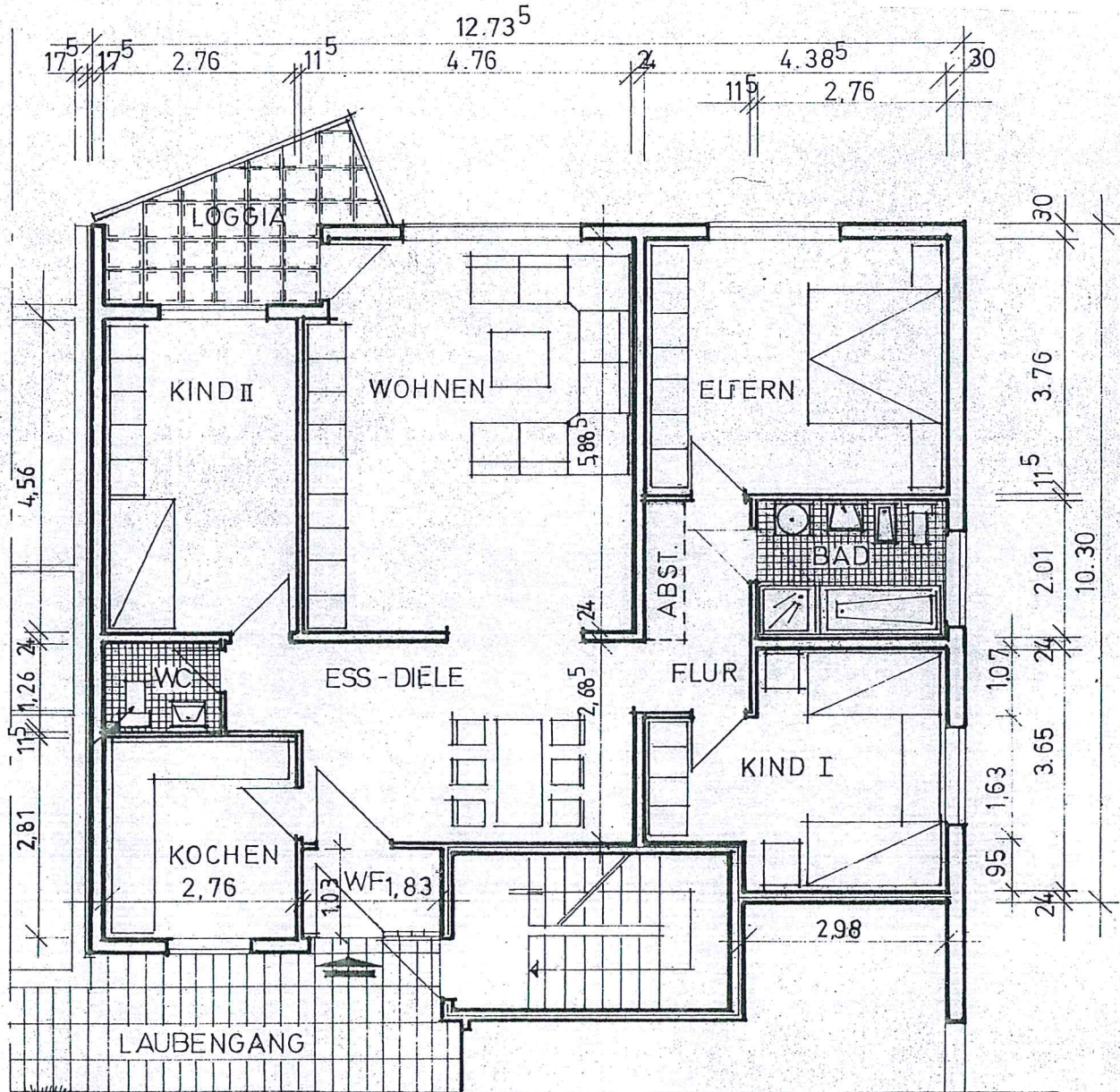


WOHNUNG TYP C 1-2



WOHNEN	=	27,01m ²
KIND	=	12,54m ²
ELTERN	=	15,99m ²
BAD	=	5,38m ²
KIND II	=	12,21m ²
FLUR	=	3,61m ²
ESS - DIELE	=	13,62m ²
ABSTELLRAUM	=	1,22m ²
KOCHEN	=	7,52m ²
WC	=	2,15m ²
WINDFANG	=	1,83m ²
LOGGIA/TERRASSE	=	1,47m ² (5,88m ²)
WOHNFLÄCHE INSG.	=	<u>104,55m²</u>

M. 1:100

